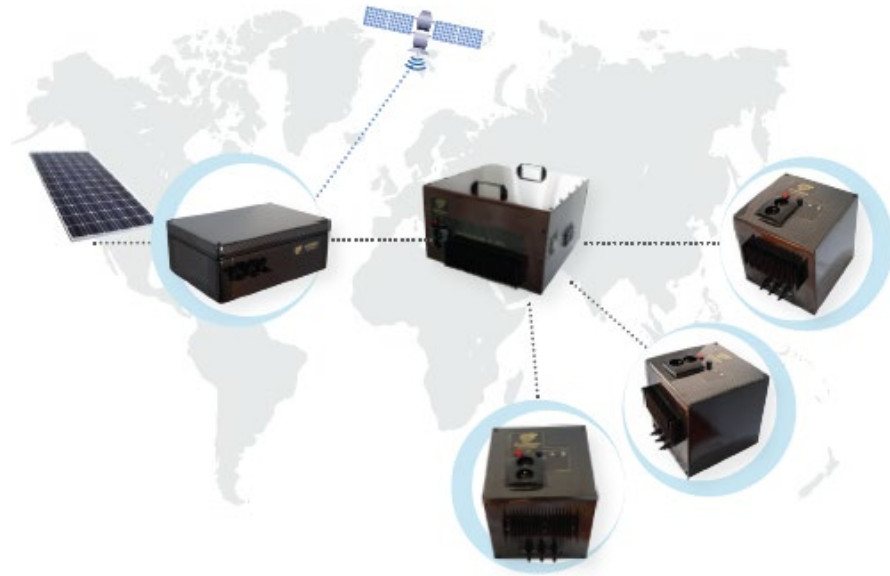


# *G-Hitech Industries*



*Powering Health, Education & Productivity  
through 2<sup>nd</sup> gen. solar mini-grid solution*

# Africa needs access to productive and affordable energy

**0 Kwh**

No energy, no development!

**+600 M**

+600 million people in Africa without access to electricity.

**+100 years**

At the current rate, it would take more than 100 years to reach 50% electrification in some countries in Africa

**>>100 years**

And hundreds of years for access to productive, clean, reliable and affordable energy

# Current energy access solutions need to be refined

Solar Home System(SHS) :

- ✓ simple and fast deployment but
- ☹ insufficient power



Mini-grid :

- ✓ Abundant and reliable energy but
- ☹ Limited flexibility (sizing or modification)
- ☹ High cost of distribution network
- ☹ High CAPEX and long payback

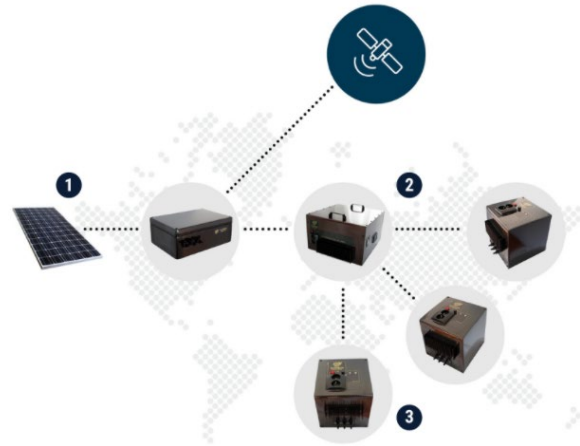


G-Hitech's objective is to combine the performance of a mini-grid with the ease of deployment of a solar home system

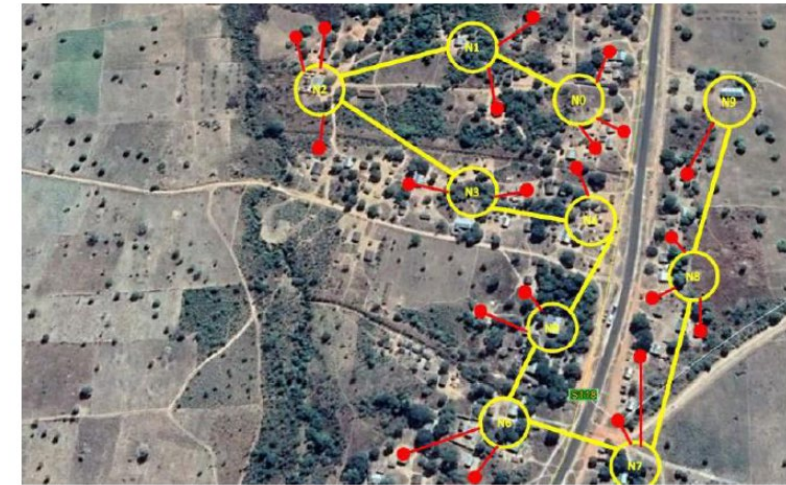
# G-ESS mesh-grid = G-HITECH's proprietary technology to accelerate energy access



Extended connectivity is the cornerstone of the G-EES mesh-grid

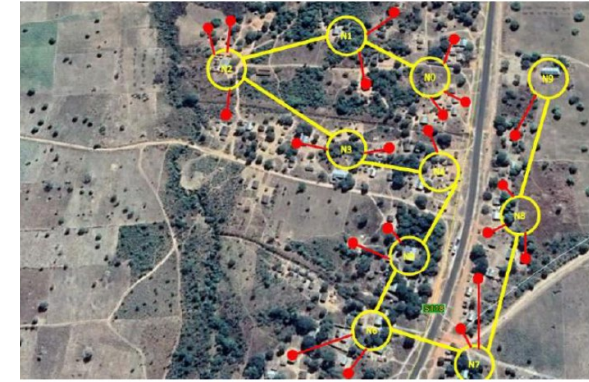


One node of the G-ESS mesh-grid allows up to 4 users to share electricity



The G-ESS mesh-grid with interconnected nodes enabling a flexible and distributed grid

# Benefits of G-ESS Mesh-Grid



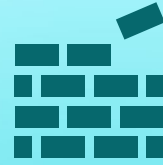
## Powerful

*Provide enough power (up to 3kW) enabling users to run income generating activities*



## Tradeable

*Owner of solar panels and batteries can share/sell their excess energy to others in their community*



## Scalable

*Start small and grow organically with the energy demand, providing a flexible and adaptable energy solution*



## Smart

*Satellite connection enables (global) predictive maintenance and PAYGO services for improved efficiency*

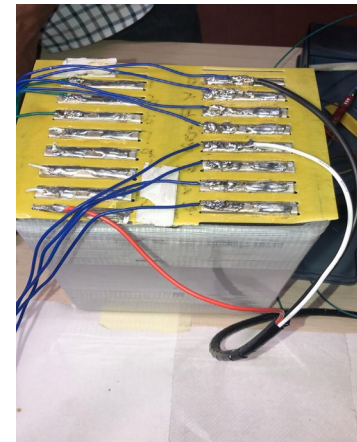
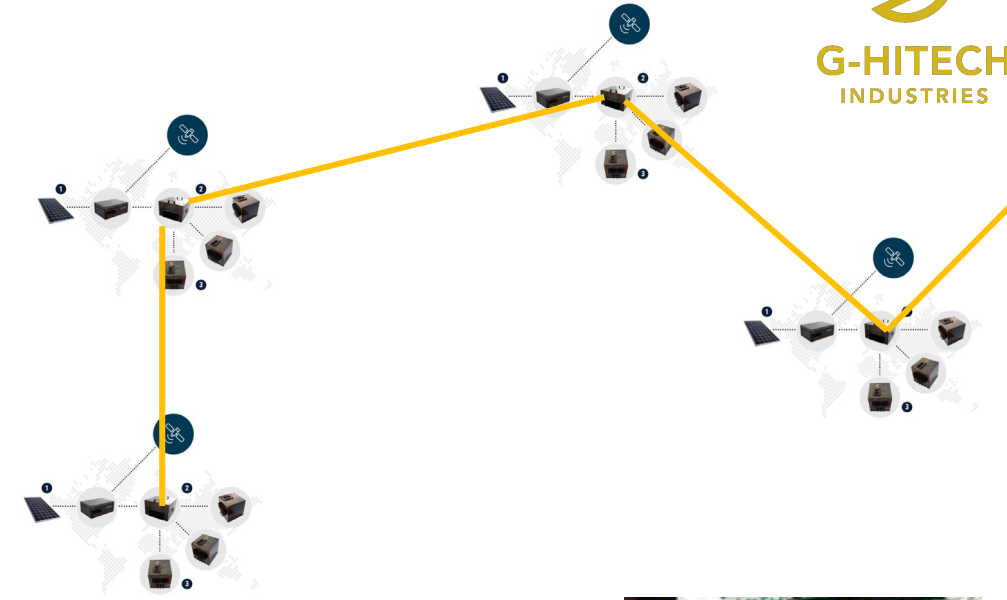


## Optimized

*Lean design and high-quality components to increase efficiency and durability while reducing logistic and cabling costs.*

# G-ESS Components

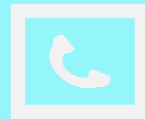
- G-SEB (G-HiTech Industries' Smart Energy Box)
  - High Specific energy batteries (7.2 – 28.8 kWh/350 VDC)
  - BMS (Battery Management System)
  - Solar battery charger (PWM/MPPT)
  - DC/ AC inverter (3 kW / 350VDC Input / 220 VAC Output)
- SDI (Standalone DC/AC Inverter)
  - DC/ AC inverter (3 kW / 350VDC Input / 220 VAC Output)
- SPV (Smart PhotoVoltaic)
  - Data transfert via satellite



# THANK YOU



117 Rue de la Hamaide,  
7333, Tertre



0473/601212



diane.umunyurwa@g-hitech.com